

eiDashboard



Gain Operational Insight into the Health and Status of Your PilotFish Interfaces

Take control, monitor and manage your interfaces with the eiDashboard, which offers the same ease of use and visual simplicity that has become a hallmark of PilotFish products. Available anytime and anywhere, the eiDashboard is a browser-based application that you can use on any desktop or smart device with network access. Business users, developers and system administrators can get a consolidated view of system performance, overall interface health, operational statistics and throughput, error rates and much, much more.

Dive in, Experience Real-Time Visibility Into Any Message and at Any Time

You need up to the minute data and real-time access. With PilotFish, you got it! By leveraging proven eiPlatform functionality and capabilities, eiDashboard users aren't constrained to the database schema we supply. They can customize the backend storage and/or the manipulation, encryption or sanitation of event data to conform to their own needs, requirements and regulations. Where other solutions provide very basic web based log and status views, PilotFish provides a far more detailed and multi-level view of interface activity. This capability

translates into being able to view high-level message orchestrations all the way down to discrete transaction details specific to each stage of processing.

Benefit from a Graphical Interface for Ease-of-Use for Both Business Users and Developers

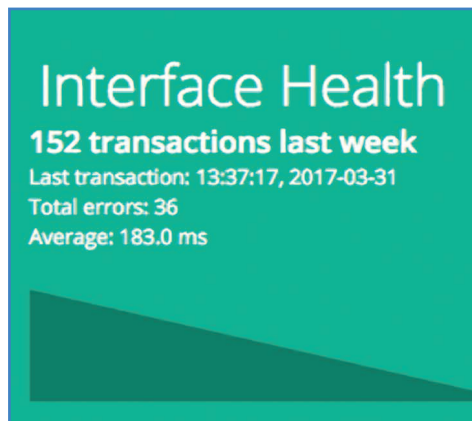
PilotFish's eiDashboard delivers its incredible operational insight with its intuitive, consistent layout. Major areas of functionality are logically grouped and listed in the navigation bar for easy access and hierarchical displays are utilized throughout the various screens to structure and organize related operations and information. Users across a

range of technical ability can quickly and effectively use the eiDashboard to extract meaningful data to enhance their productivity and control, monitor and manage their interfaces.

Harness Powerful Functionality With a REST-Based API Difference

PilotFish's eiDashboard is built on top of the eiPlatform's REST-based APIs for its operational reporting and control capabilities. These underlying REST APIs can be

utilized directly by solution providers to provide programmatic access to eiPlatform systems operations and management thus allowing greater customization and automation.



Main Dashboard Home

Developers and business users can make better and faster decisions by utilizing the eiDashboard. The overview page presents a consolidated view of system performance, overall interface health and summary statistics of interface throughput and error rates. It also shows real-time system level statistics of the connected eiPlatform.

Here users can view statistics on:

- **Disk Usage** – for the amount of disk space used on the system
- **CPU** – to determine the load put on the CPUs
- **Used RAM** – to see the amount JVM memory used

Interface Health

In this panel, developers can view the average statistics for the selected time frame and determine if routes are working as expected. Business users gain insight to quickly determine the number of valid transactions for interfaces that may represent specific client or vendor feeds.

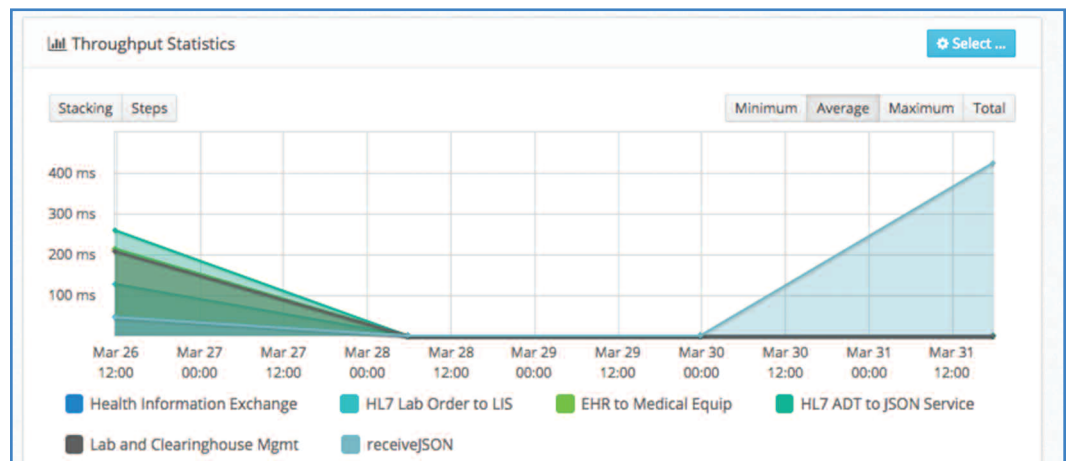
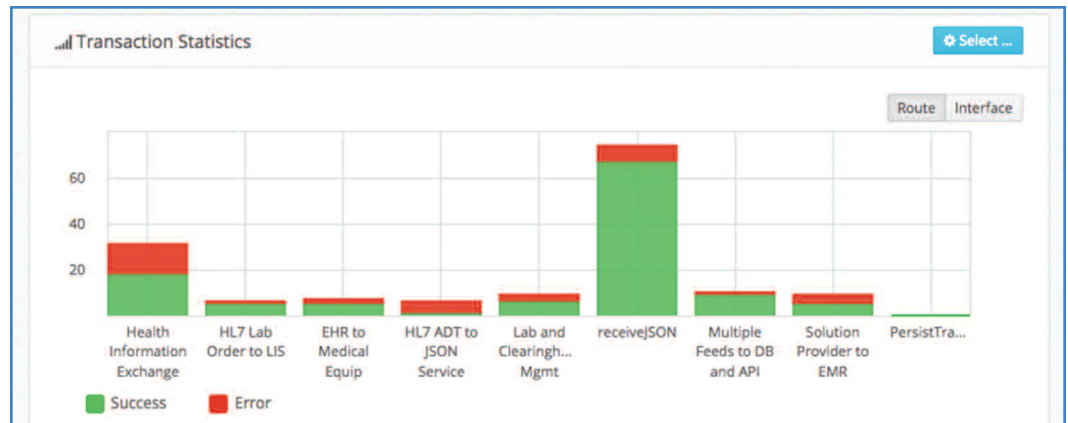
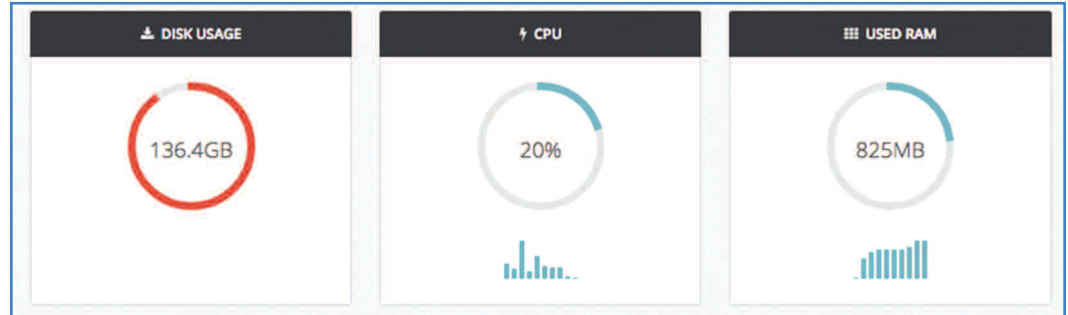
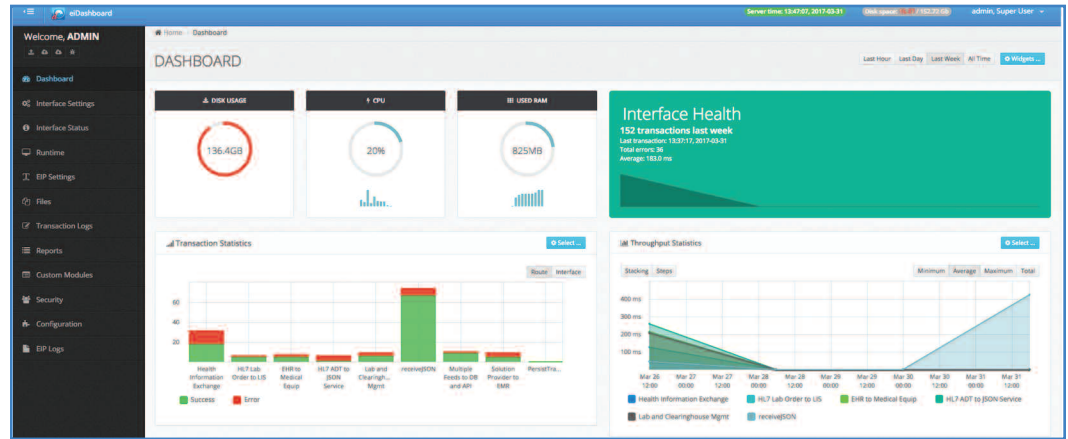
Transaction Statistics

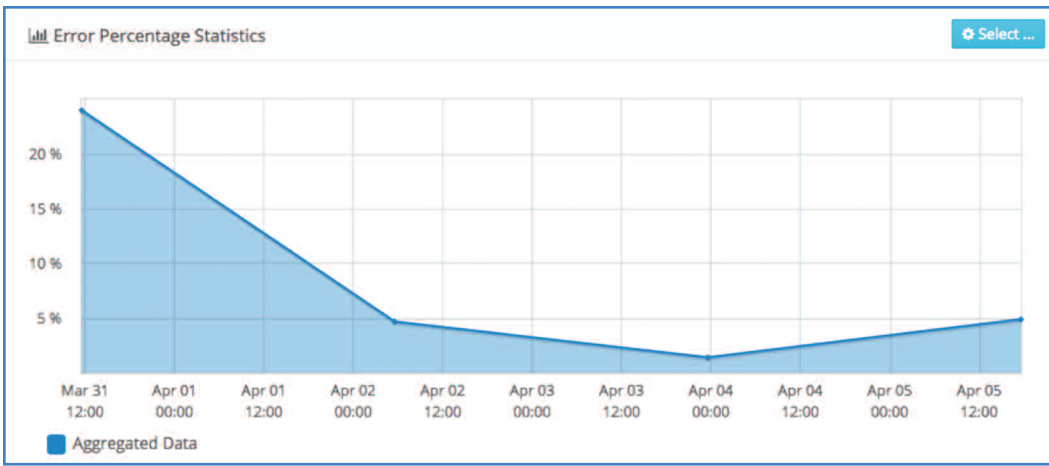
In the Transactions Statistics panel, users can view the total number of transactions for the selected time frame per route or interface. This is particularly important for a developer who can use this data to quickly identify which routes are causing errors and may need to be modified.

The business user gains insight into which routes are hit the most often. For example, if each route shows a client connection, they can quickly see which client has provided the most orders.

Throughput Statistics

The Throughput Statistics panel shows route activity throughput at a given time interval. The system administrator can see when activity is highest so that hardware resources can be properly allocated to better manage load. Business users can make better business decisions by quickly identifying what times of the week clients are making transactions.





Error Percentage Statistics

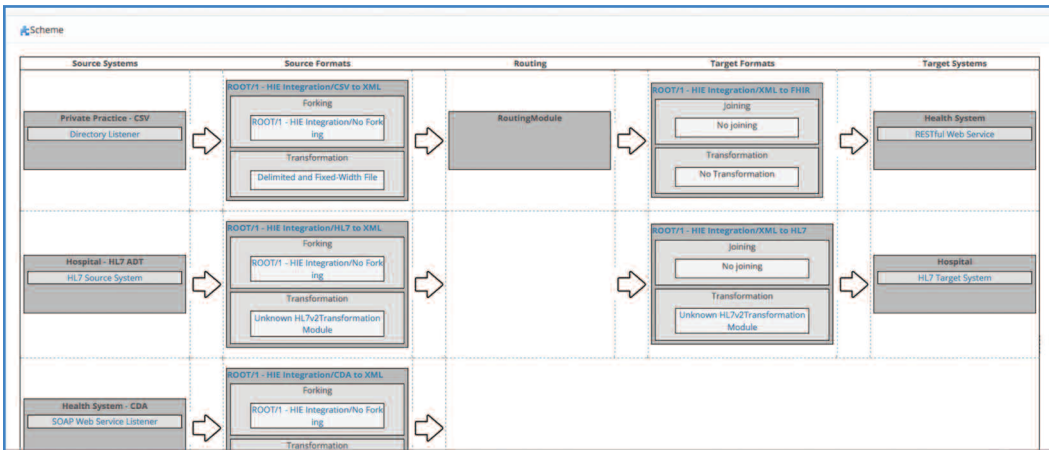
The eiDashboard is all about users gaining more operational insight to make better, faster decisions. In this panel users can view the percentage of errors at a given time frame to pinpoint problems. Business users can correlate the time of errors with client messages to see which client sent them to determine what point in the process they failed.

Configuration Tab

The eiDashboard doesn't just provide operational data and interface statistics. It also offers users tools to be more productive.

Scheme

In the Configuration tab (Scheme panel) developers can graphically view the structure of a route. By clicking the route, they can directly edit the values in the route and make changes to the settings of all interface components. This allows developers to quickly make changes on the fly to route variables without having to lose time by diving into the eiConsole application.



Interface Status

Name	Start timestamp	Last transaction	Total #	Avg. ms	Errors #	Statistics	Settings
ROOT	17:58:05, 2017-03-14						
1 - HIE Integration	18:59:55, 2017-03-22						
Health Information Exchange							
2 - Laboratory Order Integration	19:26:07, 2017-03-08						
HL7 Lab Order to IIF							
3 - Medical Equipment Integration	19:26:14, 2017-03-08						
614 to Medical Equip							
4 - Food Nutrition Mgmt Integration	19:26:24, 2017-03-08						
HL7 ADT to JSON Service							
5 - Revenue Cycle Mgmt Integration	19:26:42, 2017-03-08						
Lab and Clearinghouse Mgmt							
6 - mHealth Integration	19:27:11, 2017-03-08						

Interface Status Tab

The interface Status tab shows the health of the interfaces based on user configurable health rules. For example, an unhealthy condition can be triggered if the processing time exceeds an upper limit, if the volume drops below an expected minimum or if a required external system goes offline.



Route Statistics

Listener: Directory Listener | Transport: RESTful Web Service

Listener[Directory Listener]	10.5%	27.15 ms
Infrastructure[Source-Directory Listener-Checkpoint]	4.9%	12.57 ms
Transformation[Delimited and Fixed-Width File]	5.5%	14.21 ms
Forking[Forking]	3.7%	9.56 ms
XSLT[XSL-cvs xml to xml.xslt]	6.7%	17.35 ms
Routing[Router]	4.8%	12.48 ms
XSLT[XSLT-transform.xslt]	11.5%	29.69 ms
Joining[Joining]	3.5%	8.90 ms
Infrastructure[Target-HL7 Target System-Checkpoint]	9.4%	24.18 ms
Infrastructure[HL7 Target System-Post-Checkpoint]	6.8%	17.45 ms
Transformation[No Transformation]	0.0%	0.00 ms
Infrastructure[Target-RESTful Web Service-Checkpoint]	3.5%	9.02 ms
Transport[RESTful Web Service]	4.4%	11.42 ms
Infrastructure[RESTful Web Service-Post-Checkpoint]	3.7%	9.58 ms

Route Statistics list each stage in a route starting from the selected listener and ending in the selected transport. The pie charts on the left of the row visually show the chunk of time used, on the right the percentage of that time. For diagnostics, users can quickly see which part of a route is taking the longest.

Runtime Tab

Runtime is where the developer can quickly correlate the load on the eiPlatform system at a given moment. Here it's all about tools that help with diagnostics.

Heap memory usage allows you to see the rate at which memory increases or decreases.

The Runtime Tab is where developers can also view performance characteristics of the platform such as active threads, classes loaded and other useful metrics.

Filters

Transaction logs available from: 2017-03-15 17:23:08

From: 2017-03-31 09:45:01

To: 2017-03-31 13:36:25

Completed: all Has errors: all

Interface:

Route:

Stage:

Attribute:

Initial interface:

Initial route: receiveJSON

Initial listener:

Apply **Clear all logs** **Open logs to schedule**

Message Logs

ID	Complete	Start Time	End Time	Initial Route	Initial Listener
112195	✓	13:07:17, 2017-03-31	13:07:17, 2017-03-31	receiveJSON	HTTP Post Listener
112182	✓	12:37:17, 2017-03-31	12:37:17, 2017-03-31	receiveJSON	HTTP Post Listener
112169	✓	12:07:17, 2017-03-31	12:07:17, 2017-03-31	receiveJSON	HTTP Post Listener

Transaction Logs Tab

Within this section, logged transactions are displayed. This allows users to rapidly drill down into route transactions for debugging purposes. This allows developers to get detailed transaction data from each stage.

The Transaction Logs page can also be used to search for specific messages that have been processed and to view the contents of the message and its attributes as it progressed through every step of the interface.

Access

Component Access Rules

Name: URI Pattern

all *

Page Access Rules

Name: Pattern

cme cme

dashboard dashboard

epi-logs epi-logs

epi-settings epi-settings

interface-settings interface-settings

interface-status interface-status

report-logs report-logs

runtime runtime

transaction-logs transaction-logs

Select Components

- ROOT
 - 1 - HIE Integration
 - Health Information Exchange
 - 2 - Laboratory Order Integration
 - HL7 Lab Order to LIS
 - 3 - Medical Equipment Integration
 - EHR to Medical Equip
 - 4 - Food Nutrition Mgmt Integration
 - HL7 ADT to JSON Service
 - 5 - Revenue Cycle Mgmt Integration
 - Lab and Clearinghouse Mgmt
 - 6 - mHealth Integration
 - receiveJSON
 - 7 - Aggregation for Analytics and Reporting
 - Multiple Feeds to DB and API
 - 8 - EMR Integration
 - Solution Provider to EMR
 - TransactionEventListener.Logging
 - PersistTransactionsinterface_Postgresql
 - PersistTransactions_Postgresql

Submit **Cancel**

Pattern **Method**

/core/*	GET
/core/ReportIssue	*
/monitoring/Settings	*
/files/DownloadFile	*
/logs/*	*
/interfaces	*
/pools/*	GET
/settings/All	*
/pools	*
/transactionlog.*	GET
/routes/*	GET
/listeners	*
/interfaces/*	GET
/configuration/*	GET

View 1 - 14 of 14

Security Tab

To meet the diverse requirements of organizations, the eiDashboard is designed to offer a wide variety of options and user access. Users can be created with assigned capabilities. Any number of capabilities can be created. Each has 3 access rules:

- Component controls access to Route and Interface components
- Page controls access to eiDashboard pages
- API controls access to connected eiPlatform Instance RESTful API calls.

The eiDashboard allows organizations to restrict individual access to specific interfaces and routes based on which business a set of routes and interfaces are utilized for.

Mobile Access, Too!

The eiDashboard is designed to work on your smart devices as well. View all the same statistics and perform the same monitoring as you do with your desktop computer. With the eiDashboard, you can keep tabs on your interfaces no matter where you are as long as you have network connectivity to the system.

See the eiDashboard in Action.
Contact us for a custom demonstration today!

